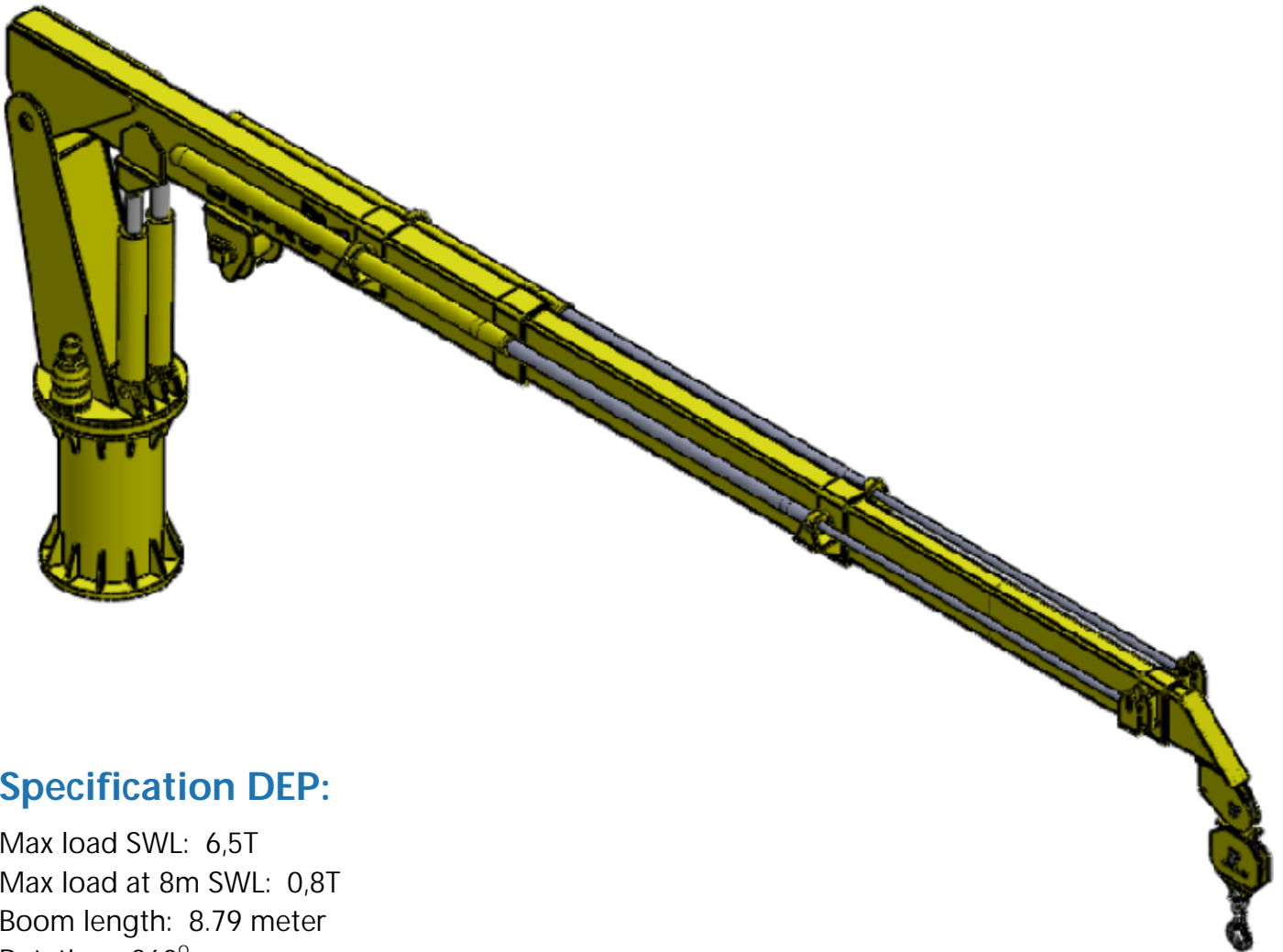


Designed for use offshore and onshore

Description:

This Telescopic Crane delivered from Depro is equipped with winch arrangement and has a boom length from 3,9 meters to 8 meters. The crane has a 360dg rotation and a working reach from 1850 mm to 8000mm from the centre of the foundation.



Specification DEP:

Max load SWL: 6,5T
Max load at 8m SWL: 0,8T
Boom length: 8.79 meter
Rotation: 360°
Boom tilt: +75° / -15°
Foundation diameter: Ø708 mm
Overall Height: 3036 mm
Depro drawing: DEP-GA-0153