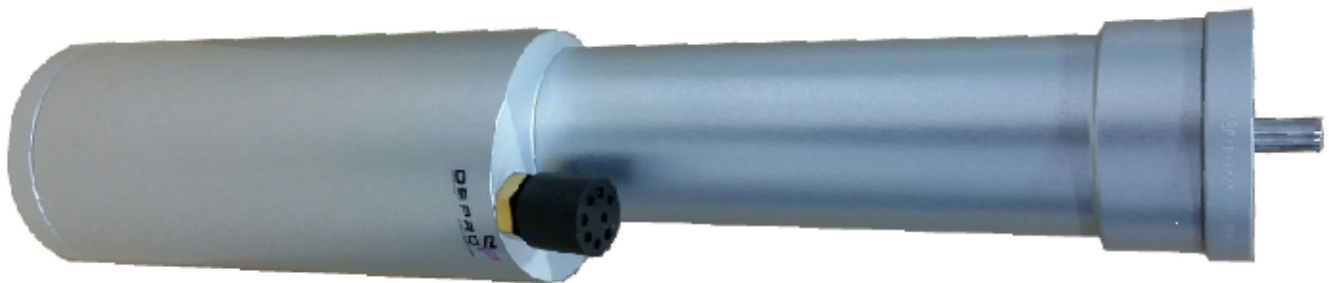


Compact Servo Motor with control unit for subsea use

Description:

The brushless Subsea Servo motor can be built into various tool applications for running accurate rotational and torque movement. Torque and RPM can easily be altered to suit any interfaces and requirements. Equipped with encoder (24 pulses / rotation). Motor controller and communication module integrated in housing. The unique software allows various communication alternatives, allowing clients to use the Subsea Servo motor in combination with ROV system. The enclosure is oil filled and compensated.

The design is made for subsea tooling. Equipment for submersion over long periods on request.



Specification:

Depro Drawing:	□ □	DEP-A-1078□□	DEP-A-1075□□	Dep-A-1079
Energy Consumptions:	□	150 W□□	□	150 W□
Maks Rotations RPM:	□ □	10□ □ □	0,02□ □ □	32
Max torque:	□ □	20 Nm□ □	□	27 Nm
Weight in air:	□ □	8 kg□ □ □	□	8 kg
Dimensions LxØ:	□ □	500xØ108 mm□	650xØ108 mm□	500xØ108 mm
Dimensions Rotor Axle:	□ □	Ø12 mm□ □	□	Ø12 mm
Material House:	□ □	AL 6082 T6□ □	□	AL 6082 T6
Material axle:	□ □	1.4418 (S165M)□	□	1.4418 (S165M)
Max water depth:	□ □	3000 m□ □	□	3000 m□

Option:

Seperate Topside HMI Control System and 10" display delivered in a Pelicase.

Depro Datasheet: DEP-DS-0441

Depro drawing: DEP-A-1102